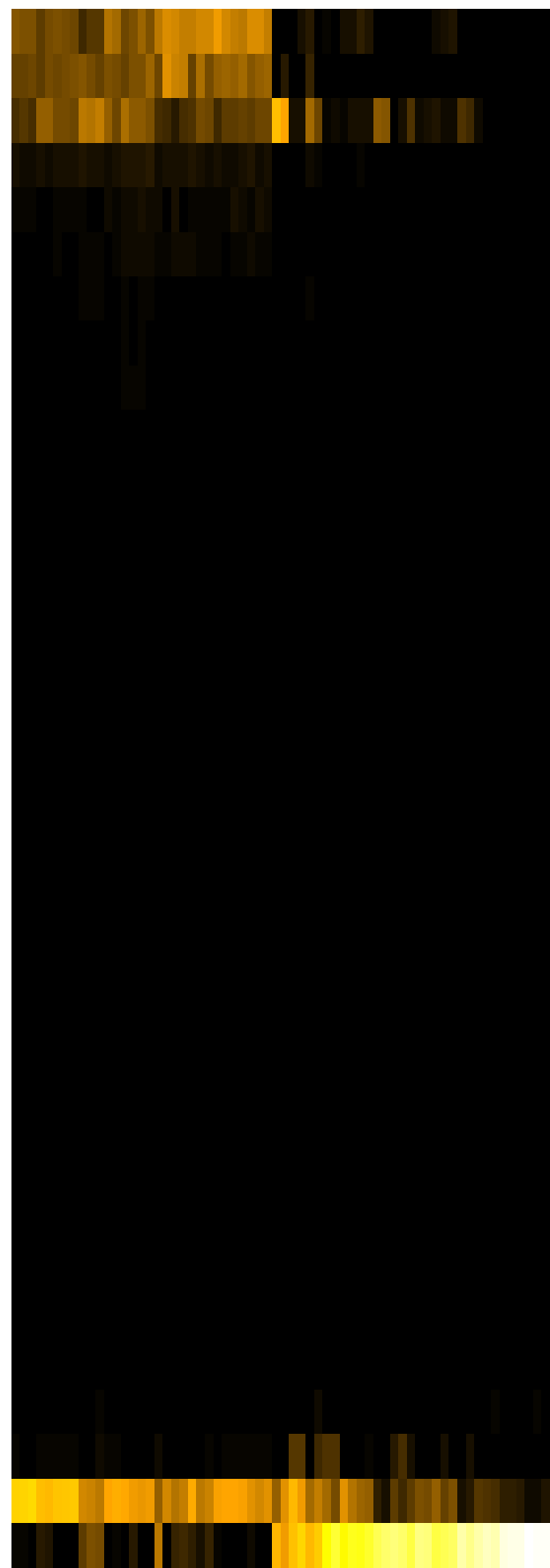
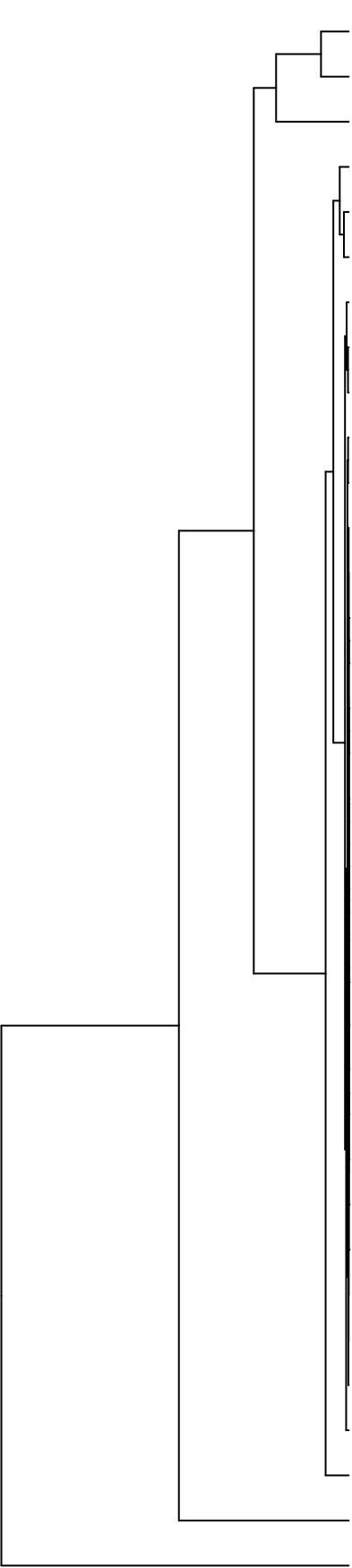


Group006
 B Final -PMA
 C Final -PMA



- Veillonellaceae
- Pasteurellaceae
- Neisseriaceae
- Carnobacteriaceae
- Fusobacteriaceae
- Actinomycetaceae
- Gemellaceae
- Campylobacteraceae
- Porphyromonadaceae
- Leptotrichiaceae
- Prevotellaceae
- Burkholderiaceae
- Atopobiaceae
- Pseudomonadaceae
- Flavobacteriaceae
- Yersiniaceae
- Comamonadaceae
- Rhizobiaceae
- Microbacteriaceae
- Sphingomonadaceae
- Weeksellaceae
- Hymenobacteraceae
- Saccharibacteria_(TM7)_[F-2]
- Mycobacteriaceae
- Phyllobacteriaceae
- Moraxellaceae
- Absconditabacteria_(SR1)_[F-1]
- Propionibacteriaceae
- Saccharibacteria_(TM7)_[F-1]
- Erysipelotrichaceae
- Lachnospiraceae
- Staphylococcaceae
- Micrococcaceae
- Streptococcaceae
- Enterobacteriaceae

- F28914.S095
- F28914.S094
- F28914.S089
- F28914.S093
- F28914.S082
- F28914.S083
- F28914.S252
- F28914.S088
- F28914.S084
- F28914.S245
- F28914.S242
- F28914.S241
- F28914.S248
- F28914.S255
- F28914.S246
- F28914.S250
- F28914.S567
- F28914.S416
- F28914.S576
- F28914.S572
- F28914.S411
- F28914.S409
- F28914.S563
- F28914.S571
- F28914.S562
- F28914.S412
- F28914.S410
- F28914.S561
- F28914.S406
- F28914.S403
- F28914.S405

Family

Samples